



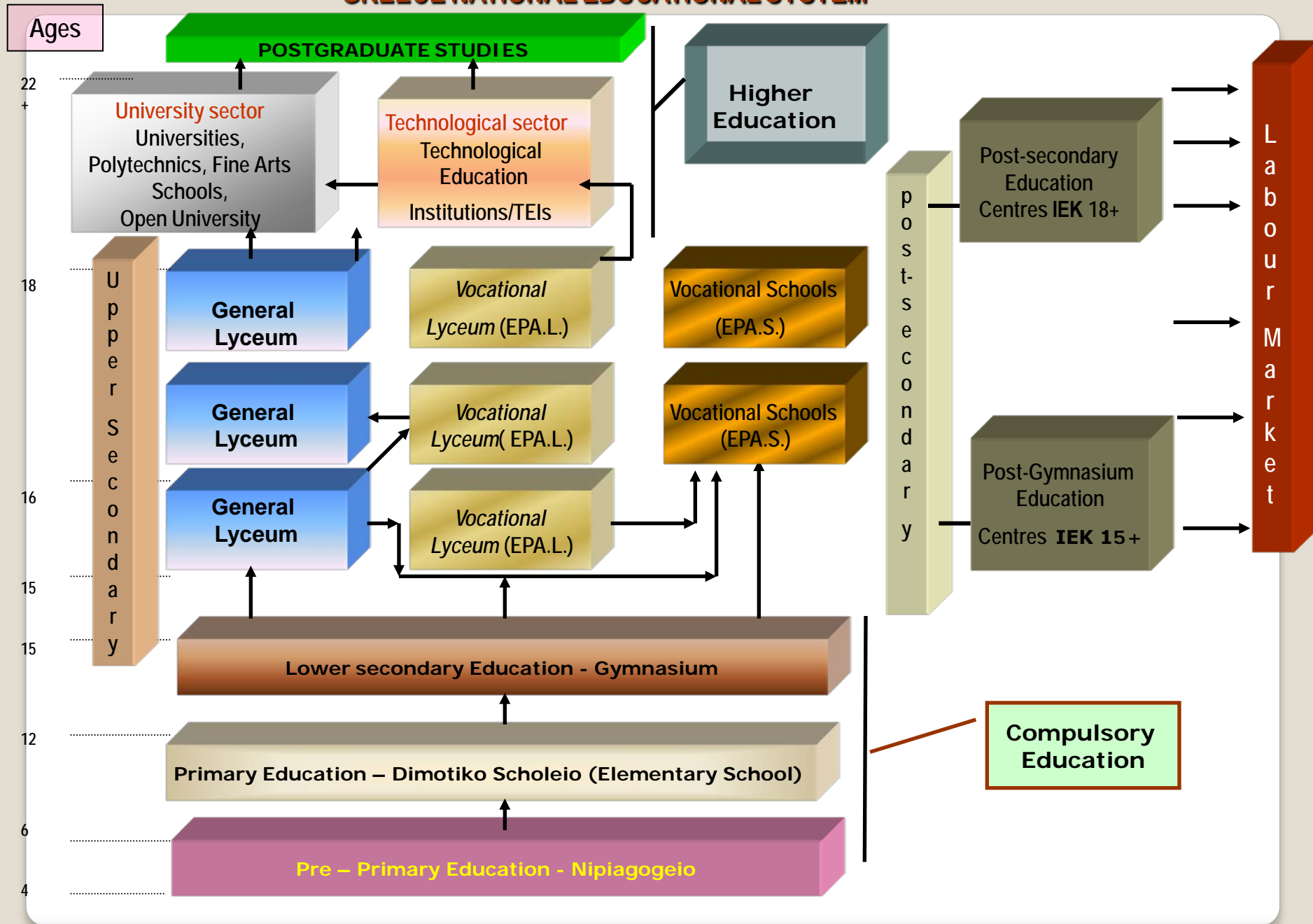
**Education, Lifelong Learning and
Lifelong Guidance Strategies in Greece**
*Perspectives for the development of a National Forum on Lifelong
Guidance– current situation and critical issues*

**Fotini Vlachaki, Greek ELGPN WP3 Representative, National Centre for Vocational
Orientation - EKEP, Ministry of Education Lifelong Learning and Religious Affairs**

**WP3 “Co-operation and co-ordination mechanisms
in guidance practice and policy development”
Cyprus Field Visit
10 -11 May 2011**



GREECE NATIONAL EDUCATIONAL SYSTEM



GREECE NATIONAL EDUCATIONAL SYSTEM

in numbers

	Schools	Permanent Teachers	Students
Primary Education	12.427	91.210	744.426
Secondary Education	3.946	99.061	657.960

Higher education – current status

	NUMBER	GRADUATE COURSES	POST GRADUATE COURSES	GRADUATE STUDENTS	POST GRADUATE STUDENTS	PhD STUDENTS	ALL
UNIVERSITIES	24	274	477	(211.409) ¹ 369.219	43.347	36.469	449.035
Technological Education Institutions/TEIs	16	212	22	(117.991) ¹ 239.682		0	239.682
ALL	40	486	499	(329.400) ¹ 608.901	43.347	36.469	688.717

¹ τακτικοί φοιτητές < ν

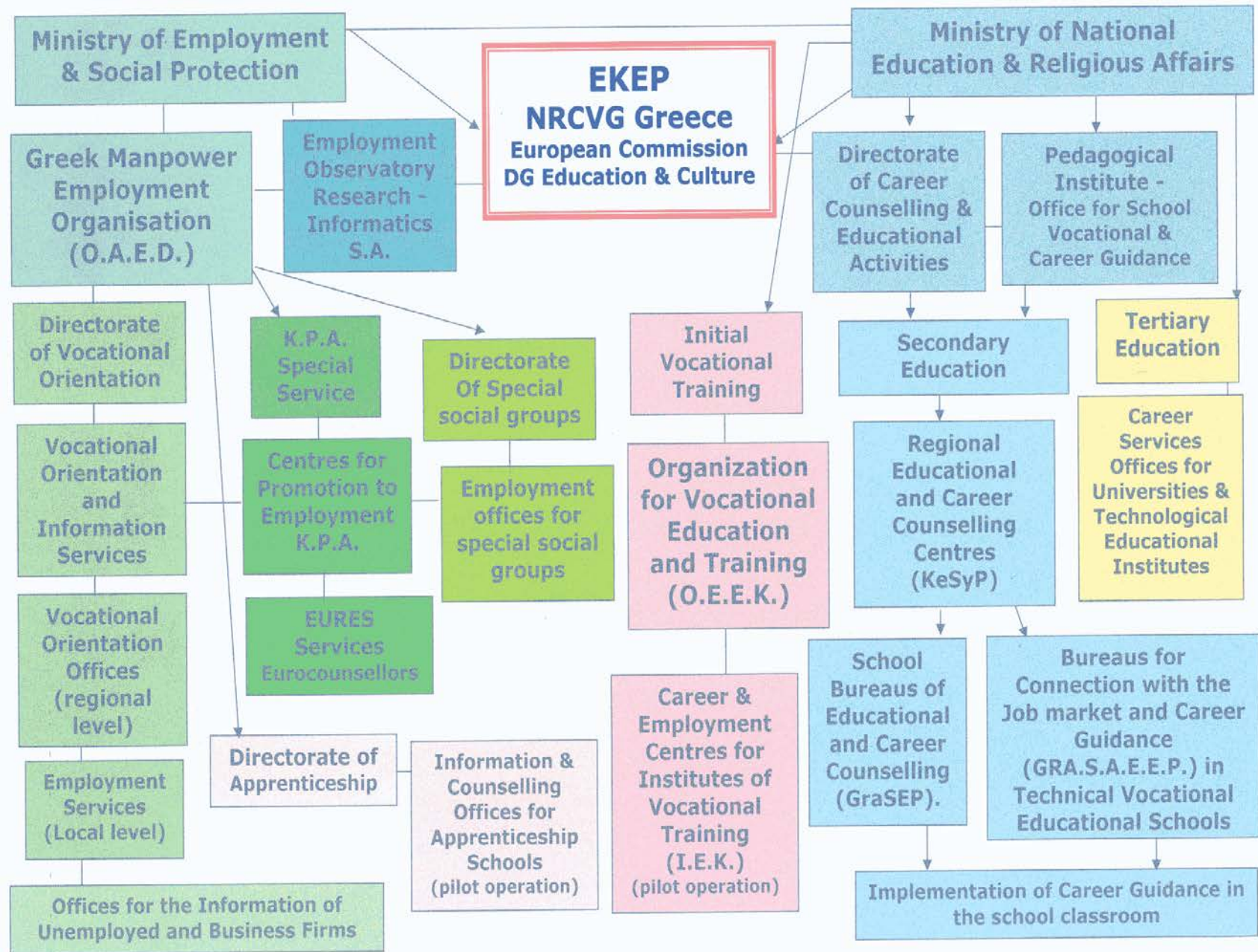
Ongoing reforms and policy initiatives

- **New law 3879/2010 on lifelong learning has been in force since September 2010 "Development of Lifelong Learning and other provisions".**
- **Establishment of the National Qualifications Framework in accordance to the European Qualifications Framework**
- **Preparation of a National Framework for the Quality Assurance of Lifelong Learning**
- **The 'new school' plan (May 2010 new law 3848/2010) according to the 'pupil first' principle, so that new generations to be able to:**
 - **Firmly step upon values and principles,**
 - **Continue their effort to learn throughout their lives,**
 - **Participate successfully in economic life and to have opportunities to upward social mobility,**
 - **Act as responsible citizens and**
 - **Be active citizens.**

Critical aspects of the "new school plan" and the "Development of Lifelong Learning" reform

- Enhancement of all-day primary education schools
- New curricula for secondary education based on the "learning to learn" skill
- Introduction of project method in school curricula to facilitate skills development
- Upgrading the technical vocational education – promoting entrepreneurship
- The ICT School (Digital Educational Platform)
- Further education of Teachers - use of ICT in in-service training of teachers
- Self Evaluation of School entities
- Administrative restructuring - decentralization (enhancing the autonomous school entity, merging and upgrading of educational structures, enhancing the regional education administration)
- Upgrading Higher Education: Internationalization – Enhancing research and innovation

The system of Counselling and Vocational Guidance in Greece



Guidance Services in Greece

- Career Guidance services in Secondary education
 - ✓ 78 regional Counseling and Guidance Centers (KESYPs): services to students and young people up to 25 years of age and also their parents
 - ✓ 570 School Career Counseling Offices (GRASEPs)
 - ✓ 105 Offices for Connection with the Labour Market and Career Guidance (**GRASY**) – pilot operation until 2010 in secondary technical vocational education schools.
 - ✓ Approximately 1000 trained guidance practitioners.
- Career Liaison Offices in Post-Secondary education institutes
- Counseling and Career Guidance offices in Second Opportunity Schools
- Career Liaison Offices in Universities and Technological Educational Institutions
 - Career Guidance services offered by Public Employment Services - Employment Promotion Centers (K.P.A) - 900 trained guidance practitioners.
- Career Guidance services offered by the Social Partners

Implementation of Career Guidance in Secondary Education

Career Guidance (SEP) today aims at:

- Aiding students in their personal development and self awareness.
- Familiarising students with information as a communication process, emphasising the importance of developing abilities in the areas of active search, critical thought and taking advantage of available information.
- Aiding students in problem solving and decision making, through activities that offer them an opportunity to live similar situations, aiming at developing their personal maturity.
- Helping young people achieve the transition from school to work by enriching their experiences, using a wide and complex range of activities, both inside and outside the school environment.

Regional Educational and Career Counselling Centres (KeSyP)

- **78 KE.SY.P Centres in Greece, operating at regional level.**

Their task is to :

- provide education and vocational guidance services and information to young people up to 25 years of age and to their parents.
- support School Career Counsellors who implement Career Counselling and Vocational Guidance either on an individual or group basis.
- Centres' staff : one or more experts responsible for Vocational Guidance and one expert in Information and Documentation.
- The Centres feature libraries with information material pertinent to Vocational Guidance.

School Bureaus of Educational and Career Counselling (GraSEP).

- 570 Offices established in major or jointly-housed schools. Their task is to :
- support the implementation of Vocational Guidance in schools
- provide counselling and information to students and their parents.
- Bureaus' staff : trained Guidance practitioners, previously served as secondary education teachers.
- furnished with library materials on the field of their competence.

ICT Tools

NESTOR Network - Pedagogical Institute

- **Information portal** for guidance practitioners in education and for anyone interested in issues related to counseling and guidance.
- **Intranet** to facilitate communication among guidance practitioners in education.
- **Computer based Psychometric tools**
(Vocational Interests, Decision Making, Vocational Self-efficacy, Vocational Values, Numeracy skills, mechanical skills)

ICT Tools

NESTOR Network - <http://195.251.20.34> or <http://sep.pi-schools.gr/>

Hellenic Paedagogical Institute - Nestor Network - Microsoft Internet Explorer

Αρχείο Επεξεργασία Προβολή Αγαπημένα Εργαλεία Βοήθεια

Πίσω Αναζήτηση Αγαπημένα Μέσα

Διεύθυνση <http://195.251.20.34/enindex.htm> Μετάβαση Συνδέσεις

Google nestor pi Search Bookmarks Check Translate AutoFill nestor pi Sign In

Ministry of National Education and Religious Affairs
Paedagogical Institute
SEP Sector

opening page ελληνική έκδοση english version version française

SEP implementation
PI centre presentation
disabled / soc. excluded
databases
informational material

Nestor Network

Welcome to Nestor Network's website! Nestor is a communication and information dissemination network, complementary to the Regional Educational and Career Counselling Centres (KeSyP) and School Bureaus of Educational and Career Counselling (GraSEP). Through it, users may:

- find information related to educational opportunities after Gymnasium, Unified and Technical Lyceum and Technical Vocational School;
- find career descriptions in the Hellenic work environment, and thus get informed in the contemporary job market;
- be updated in regard to Municipality-based Regional Educational and Career Counselling Centres (KeSyP), School Bureaus of Educational and Career Counselling (GraSEP) and local job markets;
- be advised by online electronic versions of the Educational and Career Counselling (SEP) textbooks and various other information material, available online;
- find links to a huge number of other websites with additional informational material.

development: istomedia

maintenance: [SEP Sector](#)

<http://195.251.20.34/enindex.htm> Internet

ένανξη Εισερχόμενα - Mic... ΠΡΟΣΦΟΡΑ ΕΚΕ... PAROUSIASI CED... Microsoft PowerP... Hellenic Paedag... EN 6:01 μμ

Implementation of the Vocational Guidance Institution in the Classroom

Guidance additional item in the curriculum involving specific activities for which the students are not marked.

“taught” at :

- High-school level (Grade C': 1 hour per week)
- Unified Lyceum (Grade A': 1 hour per week, 2nd semester).
- There are specific textbooks and teachers' books for students and instructors issued by Pedagogical Institute.

Examples of good practices in Secondary Education

Career Education Programs in Secondary Education Schools

- **Pilot Career Education Projects** as extra- curriculum activities, implemented on annual basis to support and expand the objectives of School Career Guidance at a local, regional and national level.

- **Career Days:** KESYP, GRASEP, GRASY guidance practitioners, teachers, students in cooperation with local labour market experts.

- thematic content: issues relating to the work environment, local economic activity, labour relations and occupational sectors, the European dimension of education-employment, the development of skills.

- activities: visits, information meetings, projects, interviews, field research, web or written communication.

Examples of good practices in Secondary Education

700 Career Guidance School Networks – Pedagogical Institute (ESF project 2003 - 2007)

-700 groups of 5 - 7 secondary schools' students worked on a project about guidance and labour market, participated in several activities, organized a conference to present the project's outcomes.

- teleconference was used in some cases as a method of communication among the members of the groups from different regions of Greece.

Examples of good practices in Training

Career Offices of the Organization of Tourism Education and Training / OTEK

OTEK - Γραφείο Διασύνδεσης - Microsoft Internet Explorer

Αρχείο Επεξεργασία Προβολή Αγαπημένα Εργαλεία Βοήθεια

Πίσω Αναζήτηση Αγαπημένα Μέσα

Διεύθυνση <http://www.career-otek.gr/cat.php?id=1> Μετάβαση Συνδέσεις

Google otek Search Bookmarks Check Translate AutoFill otek Sign In

Google™ Toolbar has automatically translated this page to English Show original Options



ΓΡΑΦΕΙΟ ΔΙΑΣΥΝΔΕΣΗΣ
ΟΡΓΑΝΙΣΜΟΣ ΤΟΥΡΙΣΤΙΚΗΣ ΕΚΠΑΙΔΕΥΣΗΣ ΚΑΙ ΚΑΤΑΡΤΙΣΗΣ

O.T.E.K.
ΟΡΓΑΝΙΣΜΟΣ ΤΟΥΡΙΣΤΙΚΗΣ ΕΚΠΑΙΔΕΥΣΗΣ ΚΑΙ ΚΑΤΑΡΤΙΣΗΣ

 Job Search  Job offers

Liaison Office

Purpose / Objective

The Organization of Tourism Education and Training (formerly OTEK CTE) is the first specialized government agency established in Greece in 1937. The present OTEK decades remarkable work in tourism education and a strong market position of Tourism. It provides vocational education and training high-level reserved for Hospitality, Food and Travel professionals under the supervision of the Ministry of Tourism.

In the OP Competitiveness-the-works O.T.E.K Liaison Office, whose aim is to link the Tourism Education and Training in the labor market.

The liaison office created to offer pupils, students, trainees and traineeships an integrated set of services designed primarily to help them reach well their future careers and to seek work in line with their knowledge.

έναρξη Εισερχόμενα - Mi... ΠΡΟΣΦΟΡΑ ΕΚΕ... PAROUSIASI CE... Microsoft PowerP... OTEK - Γραφείο ... EN 5:56 μμ

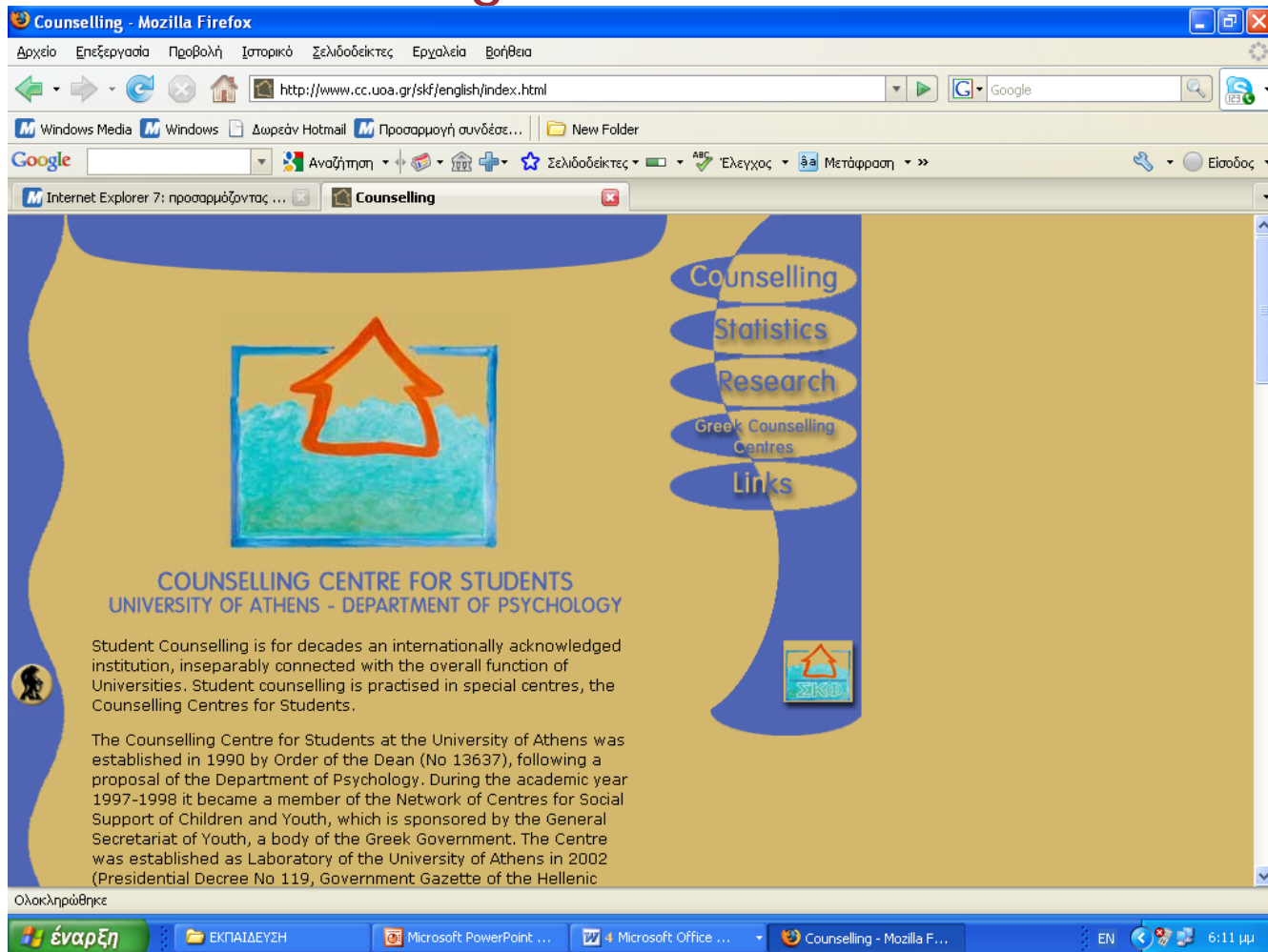
Implementation of Career Guidance and Counselling in Tertiary Education

Career Services Offices in Universities and Higher Technological Educational Institutes (TEI)

- link the institutes of higher education with socioeconomic environment and labour market.
- help students and graduates smoothly approach their future career and also find a job that is in accordance with the knowledge they received during their studies.
- **collect and provide information mostly on:**
 - ✓ postgraduate studies in Greece and abroad,
 - ✓ financial and educational news in Greece and abroad,
 - ✓ available funding,
 - ✓ jobs for graduated,
 - ✓ new professions and specialties,
 - ✓ programmes concerning the studies and mobility of students and graduated in Europe,
 - ✓ practice / training
- **give advice about :**
 - ✓ the wording of a CV or the structure of an application form,
 - ✓ Candidate's presence at an interview for a job

Examples of good practices in Tertiary Education

E - Counseling and Guidance Services



Examples of good practices in Tertiary Education

E- Career Office

Welcome to the Career Services Office Aristotle University of Thessaloniki - Welcome to CSO - Mozilla Firefox

Αρχείο Επεξεργασία Προβολή Ιστορικό Σελιδοδείκτες Εργαλεία Βοήθεια

http://www.cso.auth.gr/

Windows Media Windows Δωρεάν Hotmail Προσαρμογή συνδέσε... New Folder

Google Αναζήτηση

Internet Explorer 7: ... Counselling Counseling Center > ... Welcome to the C... Πληροφορίες για φοι... Establishment - Purp...

Google Η σελίδα έχει μεταφραστεί αυτόματα σε Αγγλικά Εμφάνιση πρωτοτύπου (Q) ☐ Να μεταφράζονται πάντα τα Ελληνικά

ΓΡΑΦΕΙΟ ΔΙΑΣΥΝΔΕΣΗΣ
ΣΠΟΥΔΩΝ ΚΑΙ ΣΤΑΔΙΟΔΡΟΜΙΑΣ

Home
For students and graduates
For employers organizations
The Liaison Office
The AUTH
Activities G.D.
Announcements
New pages
Search ...
The old web site

Welcome to the new website of the Liaison Office. You can navigate to it through the next menu. Due to the large amount of information the new site is still under construction. As much information as you can not find there, are still available the old web site which you can access the last option under the menu bar nearby. The old site is no longer no longer be updated. However, where databases are common to both sites. Thank you for your understanding and apologize for the temporary inconvenience.

The Liaison Office is a department of the Aristotle University of Thessaloniki, whose main goal is to help students and graduates to a smooth transition to their future careers and to pursue such work with the knowledge gained from their studies.

Worth visiting:
"Co-work" business -
Academic Advisors
Entrepreneurship

Most Popular:
Select

Search:

This page:
Put to favorites
Make your home
print
Send it to a friend

Contact us electronically:

http://www.auth.gr/

έναρη ΑΠΑΣΧΟΛΗΣΗ Microsoft PowerPoint ... Microsoft Office ... Welcome to the Care... EN 6:30 μμ

Guidance and Counselling in the field of Employment

- The **Employment Services** - local level
- **Vocational Orientation and
Information Services** Athens,
Thessaloniki and Iraklio.

Greek Employment Organization OAED – Counseling & Guidance Services

- Individual Counseling and Guidance Services:

- young people aged 14-18 years are invited to visit OAED Career Offices on their own initiative (either alone or in organized groups (e.g. school classes).
- offered to adults and unemployed who wish to redirect their career.

- Active Career Guidance Programme (once a year as a summer- school initiative):

- aimed at young people 5-18 years old, **particularly those who left school after 9 year compulsory education.**
- give a brief information on professions and help young people to explore their potential and to choose their profession, knowing what their strengths and cons of their decision.

Centers for Promotion to Employment - K.P.A.

- staffed with former highly experienced employees of OAED and trained Work Counsellors (e.g. Psychologists, Sociologists, Social Workers, Economists, Lawyers and Political Scientists)
- equipped with latest technology instruments

"Individual Counselling – Intervention" implemented by K.P.A.s.

- Each unemployed will have the opportunity to address to a Work Counsellor.
- Direct communication and close cooperation of each Work Counsellor with the unemployed will lead to the fulfilment of their needs.
- Each registered unemployed will be able to select one of the opportunities provided by the new card of multiple use, offered by OAED, in agreement with the Work Counsellor.

The unemployed can choose among several programs, financed by OAED:

- vocational training
- acquisition of work experience
- participation in employment programs for unemployed, implemented by funded enterprises
- participation in programs for New Entrepreneurs
- provision of counselling services by a specialised Career Guidance Counsellor
- unemployment benefit

Aim : composition of the Individual Action Plan

The K.P.A.s are established to address the needs of the following groups of people:

- unemployed
- long-term unemployed (45 - 64 years old, unemployed for at least one year)
- those at risk of unemployment
- school drop-outs and in search of work or training
- redundant owing to previous employer business failure
- vulnerable social groups: people with special needs, repatriates, rehabilitated addicts, women, single-parent families, immigrants etc.
- the young and old seeking reorientation owing to obsolescence of previous skills
- individuals interested in labour mobility - in which case they are referred to a Eurocounsellor.

European Employment Services (EURES) Offices

- OAED functions as the **National EURES Agency**
- Eurocounsellors established in the major towns of the country.
- offer expert services and information regarding:
 - the ways one can find a job in another country,
 - the work/employment conditions in the countries of the European Economic Space and
 - current job demand status.

Information Offices for the Unemployed and Business Firms

- come under certain groups of actions taken up by Local Government Organizations, Industrial & Handicraft Chambers, and Trade Unions (Employers and Employees).
- aim to benefit both the unemployed and businesses with respect to information about education/training and vocational opportunities, as well as information about Counselling & Vocational Guidance programmes.
- Some of these Offices are:
 - **Information Office for the Unemployed and Business Firms in collaboration of Greek Workers' Confederation (G.S.E.E)**
 - **Information Office for the Unemployed and Business Firms in collaboration with Athens Chamber of Commerce and Industry.**

Provision of Information Services: ICT Tools

Examples of good practices by the Social Partners

**Greek Workers' Confederation (G.S.E.E) –
Information Centre for the Employed and Unemployed - KE.Π.E.A.** <http://www.kepea.gr>

KE.Π.E.A. :: ΚΕΝΤΡΟ ΠΛΗΡΟΦΟΡΗΣΗΣ ΕΡΓΑΖΟΜΕΝΩΝ & ΑΝΕΡΓΩΝ - Microsoft Internet Explorer

Αρχείο Επεξεργασία Προβολή Αγαπημένα Εργαλεία Βοήθεια

Πίσω Αναζήτηση Αγαπημένα Μέσα

Διεύθυνση <http://www.kepea.gr/article.php?cat=14> Μετάβαση Συνδέσεις

Google kepea Search Bookmarks Check Translate AutoFill kepea Sign In

Google™ Toolbar has automatically translated this page to English Show original Options

ΚΕ.Π.Ε.Α. Γ.Σ.Ε.Ε. ΚΕΝΤΡΟ ΠΛΗΡΟΦΟΡΗΣΗΣ ΕΡΓΑΖΟΜΕΝΩΝ & ΑΝΕΡΓΩΝ

Home Latest News FAQ Laws Circulars Statistics Links Sitemap Contact

Αναζήτηση OK Current EGSSE 2008-2009

Γραφείο Εργασιακών Σχέσεων
Γραφείο Ασφαλιστικών Θεμάτων
Γραφείο Οικονομικών Μεταναστών
Γραφείο Εύρεσης Εργασίας
Εθνική Γενική Συλλογική Σύμβαση Εργασίας (ΕΓΣΣΕ)
Ίδρυση Σωματείου

Αλφηβητικό Δείκτης
Information on provisions of labor law.
more ...

Καταχώρηση Βιογραφικού

Εύρεση προσωπικού

Θέσεις Εργασίας
Προκηρύξεις
Σεμινάρια

Περιοχή Μελών
για ανέργους και επιχειρήσεις

Περιφερειακά Γραφεία Πληροφόρησης Εργαζομένων & Ανέργων

έναντη Εισερχόμενα - Mic... ΠΡΟΣΦΟΡΑ ΕΚΕΠ... PAROUSIASI CED... Microsoft PowerP... :: KE.Π.E.A. :: - Κ... EN 6:05 pm

Provision of Information Services: ICT Tools

Examples of good practices by the Social Partners

Athens Chamber of Commerce and Industry –
Employment and Recruitment Office <http://services.acci.gr/jobfinder/>

The screenshot shows a Microsoft Internet Explorer browser window displaying the website of the Athens Chamber of Commerce and Industry (ACCI) Job Finder. The browser's address bar shows the URL <http://services.acci.gr/jobfinder/>. The website's header includes the ACCI logo and the text "Ε.Β.Ε.Α. Εμπορικό & Βιομηχανικό Επιμελητήριο Αθηνών Υπηρεσία Στελέχωσης Επιχειρήσεων". A login section is visible with fields for "E-mail a User" and "Password", and a "GO" button. The main content area features a search form with fields for "Keywords:", "County:", "Department of Work:", and "Positions listed in:", along with a "Αναζήτηση Εργασίας" button. To the right of the search form are two promotional banners: "Looking for work?" and "You Employer?". Below the search form is a "Work areas" section listing various job categories. The browser's taskbar at the bottom shows several open applications, including "έναρξη", "Εισερχόμενα - Micr...", "ΠΡΟΣΦΟΡΑ ΕΚΕΠ...", "ΠΑΡΟΥΣΙΑΣΗ CED...", "Microsoft PowerPo...", and "Υπηρεσία Στελέχω...". The system clock in the bottom right corner indicates the time as 6:08 μμ.

Υπηρεσία Στελέχωσης Επιχειρήσεων - Microsoft Internet Explorer

Αρχείο Επεξεργασία Προβολή Αγαπημένα Εργαλεία Βοήθεια

Πίσω Αναζήτηση Αγαπημένα Μέσα

Διεύθυνση <http://services.acci.gr/jobfinder/> Μετάβαση Συνδέσεις

Google <http://services.acci.gr/jobfinder/> Search Check Translate AutoFill Sign In

Google™ Toolbar has automatically translated this page to English Show original Options

E.B.E.A.
Εμπορικό & Βιομηχανικό Επιμελητήριο Αθηνών
Υπηρεσία Στελέχωσης Επιχειρήσεων

Login E-mail a User Password GO
-To e-mail σας-

Home Work O My Account Career Advice Articles Contact form

Keywords:
County: - Select Area --
eg Engineer or Vendor

Department of Work:
Positions listed in:
- Select -- - Select --

Αναζήτηση Εργασίας

Looking for work?
Be available to employers now!
εγγραφείτε

You Employer?
Find appropriate staff immediately!
εγγραφείτε

New service from ACCI
Welcome to the online service Staffing Business Chamber of Commerce and Industry of Athens. The service was created for recruitment and management of companies and find a job from anyone interested.

The service operates pilot and ask your understanding for any malfunction may occur. Feel free to send us your opinions, ideas and observations to make our system more usable and accessible to you.

You can register for free and immediate use our service. We are always at your disposal for any assistance or clarification.

Work areas

- Purchase / Procurement
- Human Resources
- Senior Management
- Insurance
- Advertising / Public Relations / Promotion
- Business Administration
- Accountants
- Transmission / distribution
- Engineers
- Media / Journalists
- Marines
- Information Technology
- Cultural / Arts
- Sales
- Business Consultants
- Technical / Skilled Labor / Service
- Tourism / Hotels / Restaurants
- Office / support

Ολοκληρώθηκε Internet

έναρξη Εισερχόμενα - Micr... ΠΡΟΣΦΟΡΑ ΕΚΕΠ... ΠΑΡΟΥΣΙΑΣΗ CED... Microsoft PowerPo... Υπηρεσία Στελέχω... EN 6:08 μμ

Provision of Information Services: ICT Tools

Examples of good practices by the Social Partners

Hellenic Confederation of Professionals Craftsmen and Merchants – Web Platform for the Unemployed and Businesses

http://www.gsevee.gr/index.asp?a_id=521&nnid=2749

The screenshot shows the GSEBEE website (Γενική Συνομοσπονδία Επαγγελματιών Βιοτεχνών Ελλιάδας) displayed in Microsoft Internet Explorer. The browser's address bar shows the URL http://www.gsevee.gr/index.asp?a_id=521&nnid=2749. The website features a blue header with the GSEBEE logo and the text "ΚΕΝΤΡΟ ΕΠΑΓΓΕΛΜΑΤΙΚΗΣ ΚΑΤΑΡΤΙΣΗΣ Γ.Σ.Ε.Β.Ε.Ε." and "Thursday, October 29, 2009". A left sidebar contains a "Show" menu with links to Training, European Programs, Research Studies, Publications, Employment, Links, and KEK GSEVEE in English. The main content area displays a news item titled "13.03.2009 Unemployed Interface Platform and Operations" with a sub-header "e-services". The right sidebar includes a search bar, a GSEBEE logo, and links to "Seminars implements HPC GSEBEE" and "Medium-Term Agenda". The bottom of the page shows a Windows taskbar with various open applications and the system clock at 6:11 pm.

Training in the field of Guidance

- **In service training by the relevant Ministries and bodies** responsible for the implementation of counselling and career guidance in education and employment to active guidance practitioners.
- **University postgraduate studies programmes** in the field of Counselling, Career Guidance and other related areas.

COORDINATION AND COOPERATION MECHANISMS FOR LLG: CURRENT LEGAL FRAMEWORK

- **EKEP** - the competent national coordination body operating since 2000 under the supervision of the Ministries of Labour and Education.
- EKEP is the executive body of System 6 of ESSEKA "System of Counselling, Vocational Guidance and Connection with the Labour Market" (Law 3191/2003).

Responsibilities at national level:

- providing scientific and technical support to the relevant stakeholders in the Ministries of Education and Labour in designing and implementing a National Policy on Guidance and Counselling,
- the development of communication and coordination of actions taken by private and public counselling and guidance service providers, aiming at the improvement of existing services,
- the education, initial and continuous training of counselling and guidance practitioners, in collaboration with/or supplementing those provided by current training services in the relevant Ministries of Employment and Education,
- defining the conditions and rules under which guidance and counselling services should operate, the relevance and adequacy of counselling and guidance practitioners' qualifications and keeping the relevant registers.

COORDINATION AND COOPERATION MECHANISMS FOR LLG: CURRENT LEGAL FRAMEWORK

At European level, EKEP is:

- the **Euroguidance Center of Greece**, member of the Euroguidance network, with the support of the Lifelong Learning Program.
- the **national body representing Greece in the European Lifelong Guidance Policy Network** – ELGPN, established by the European Commission in 2007.

COORDINATION AND COOPERATION MECHANISMS FOR LLG: ***Additional new legal framework***

- Since 2010 EKEP stands under the supervision of the Ministry of Education Lifelong Learning and Religious Affairs (Presidential Decree24 -Government Gazette A 56/15.4.2010).
- New Law 3879 “Development of Lifelong Learning and other provisions” Government Gazette A’ 163 21/9/2010):
 - EKEP has been placed in the National Network of Lifelong Learning, as one of the administrative bodies for lifelong learning regarding its responsibilities that are linked to counseling and vocational guidance in the lifelong learning framework.
 - Counseling services and/or Vocational Guidance services providers are also part of the National Network of Lifelong Learning as the relevant bodies providing lifelong learning services.

SELECTIVE COORDINATION PROJECTS CARRIED OUT BY EKEP IN COMPATIBILITY WITH EUROPEAN PRIORITIES

- Draft framework for the accreditation of counselling and guidance practitioners' qualifications.
- Legal framework for determining the operating conditions of the private counselling and vocational guidance services providers and structures.
- Quality Assurance Management System for Guidance Services in Greece.
- National Counselors' Network – Web Forum "Irida"
<http://irida.ekep.gr/>.
- Specialized library in Counselling and Vocational Guidance
<http://library.ekep.gr/>.
- National Database of Learning Opportunities "PLOIGOS"
<http://ploigos.ekep.gr> connected to PLOTEUS" II.
- Meetings, conferences, seminars at local and regional level for Guidance practitioners in education, training and employment settings.
- Scientific & Information Material (manuals, handbooks and guides in counseling and vocational guidance)

Provision of Information Services: ICT Tools



PLOIGOS - National Database of
Educational Opportunities (PLOTEUS II)

<http://ploigos.ekep.gr>

- Primary Education
(18.821 educational opportunities)
- Secondary Education
(6.676 educational opportunities)
- Post - Secondary Education
(15.271 educational opportunities)
- Higher Education
(1.882 educational opportunities)

Provision of Information Services: ICT Tools

E.K.E.P. - National Resource Centre for Vocational Guidance - Search Learning Opportunities - Microsoft Internet Explorer

Αρχείο Επεξεργασία Προβολή Αγαπημένα Εργαλεία Βοήθεια

Πίσω Αναζήτηση Αγαπημένα Μέσα

Διεύθυνση http://ploigos.ekep.gr/ekep/external/ext_lo_search.zul?uaId=7 Μετάβαση

πλοηγός

ΕΚΕΠ ΕΘΝΙΚΟ ΚΕΝΤΡΟ ΕΠΑΓΓΕΛΜΑΤΙΚΟΥ ΠΡΟΣΑΝΑΤΟΛΙΣΜΟΥ

Αναζήτηση Εκπαιδευτικών Ευκαιριών

Menu

"Easy" Searches

Without "Easy" Search...

Keywords :

Education level :

Specific target group :

Subject :

Learning Language :

Study Type :

Duration :

AND OR

Select Education level...

☐ Special needs education ☐ Adult education

☐ Courses dedicated to foreigners ☐ International programmes

☐ Language/culture courses for foreigners

Select Subject...

Select Learning Language...

☐ Full-time ☐ Part-time

☐ Day ☐ Evening

☐ Weekend ☐ Short

☐ Distance ☐ Boarding

Select Duration...

Ολοκληρώθηκε

έναρξη

http://www.ekep...

E.K.E.P. - National ...

ΥΠΟΕΡΓΟ 14

PRESENTATION_E...

Παρουσίαση Ploigo...

EN

10:14 πμ

Provision of Information Services: ICT Tools

E.K.E.P. - National Resource Centre for Vocational Guidance - Search Learning Opportunities - Microsoft Internet Explorer

Αρχείο Επεξεργασία Προβολή Αγαπημένα Εργαλεία Βοήθεια

Πίσω Αναζήτηση Αγαπημένα Μέσα

Διεύθυνση http://ploigos.ekep.gr/ekep/external/ext_lo_search.zul?uaId=7 Μετάβαση

πλοηγός **ΕΚΣΠ** ΕΘΝΙΚΟ ΚΕΝΤΡΟ ΕΠΑΓΓΕΛΜΑΤΙΚΟΥ ΠΡΟΣΑΝΑΤΟΛΙΣΜΟΥ

Αναζήτηση Εκπαιδευτικών Ευκαιριών

Menu

<input type="checkbox"/> Title	Provider name	Course Location
<input type="checkbox"/> Second cycle Program of Study of Department Accountant and Financing, Economic University Athens	Department Accountant and Financing, Economic University Athens	Attica
<input type="checkbox"/> Second cycle Program of Study of Department of Economic Sciences, University of Peloponnese	Department of Economic Sciences, University of Peloponnese	Arkadia
<input type="checkbox"/> Second cycle Program of Study of Department Economic Sciences of Faculty Social Sciences of University Kritis	Department of Economic Sciences of Faculty Social Sciences of University Kritis	Rethymno
<input type="checkbox"/> Second cycle program of Study of Department of Economic Sciences, University of Thessaly	Department of Economic Sciences, University of Thessaly	Magnesia
<input type="checkbox"/> Undergraduate Programme of Studies of the Department of Regional Economic Development of the University of Central Greece	Department of Regional Economic Development	Viotia

Ολοκληρώθηκε

Internet

έναρηξη E.K.E.P. - National R... E.K.E.P. - National R... TG2 Microsoft PowerPoint ... EN 10:31 πμ

National Network of Counselors and Counseling Structures

- Electronic communication ICT platform “IRIDA”

<http://irida.ekep.gr>

- Facilitate the development of common initiatives and actions among different guidance structures at different fields (KESYP, GRASEP, GRASY, KPA, TERTIARY EDUCATION CAREER OFFICES).
- Disseminate current and innovative activities in career counseling and guidance.
- Create an active network, of information sharing and exchange of views and opinions, among guidance practitioners in Greece and abroad.
- Provide information to guidance practitioners regarding scientific and professional events - activities (meetings, conferences, publications etc.).

National Network of Counselors and Counseling Structures - Electronic communication ICT platform "IRIDA"

EKEP FORUM - Downloads - Mozilla Firefox

Αρχείο Επεξεργασία Προβολή Ιστορικό Σελιδοδείκτες Εργαλεία Βοήθεια

http://irida.ekep.gr/index.php?option=com_docman&Itemid=34

Customize Links Free Hotmail Windows Media Windows Δωρεάν Hotmail Προσαρμογή συνδέσε...

EKEP **ICHNILATIS** **LIBRARY**

EKEP ΕΘΝΙΚΟ ΚΕΝΤΡΟ ΕΠΑΓΓΕΛΜΑΤΙΚΟΥ ΠΡΟΣΑΝΑΤΟΛΙΣΜΟΥ

Πλατφόρμα Επικοινωνίας
Λειτουργιών και Φορέων Συμβουλευτικής και Επαγγελματικού Προσανατολισμού

Home Contact Registration form search...

News -
Announcements
Calendar
Files
Forum
Distance Learning
Manage Account
Hi, vouli

Logout
Online users
• vouli

Downloads Home Search Document Submit File

Categories Files

Counseling and Vocational orientation.
Documentation about Counseling and Vocational orientation. 16

Education
Documentation about Education. 1

Employment
Documentation about Employment. 0

Social exclusion
Documentation about social exclusion. 14

Vocational training
Documentation about Vocational training 19

Τελευταία νέα

- ICT Seminar for Guidance Counsellors
- System inputs
- System test

S	M	T	W	T	F	S
26	27	28	29	30	1	2
3	4	5	6	7	8	9
10	11	12	13	14	15	16
17	18	19	20	21	22	23
24	25	26	27	28	29	30
31	1	2	3	4	5	6

Search Ichnilatis

Notice: Undefined variable: output in C:\Program Files\Apache Software Foundation\Apache2.2\htdocs\platform\modules\mod_sichnilatis.php

Ολοκληρώθηκε

έναρξη

Νέο - Έγγραφο του ...

EKEP FORUM - Downl...

EN 3:28 μμ

EKEP''s CURRENT PROJECTS IN RELATION TO COOPERATION & COORDINATION

- **"COMMON ACTION PLAN FOR THE DEVELOPMENT OF VOCATIONAL GUIDANCE AND COUNSELLING SERVICES IN EDUCATION, INITIAL TRAINING AND EMPLOYMENT" (NSRF 2007-2013)"**

Strategic Goals - Priorities:

- Quality assurance of guidance services.
- Raising Access to guidance services.
- Promoting Career management Skills and motivation of citizens in relations to lifelong career development issues.
- Coordination and Networking of LLG services.
- Use of ICT in guidance provision.
- Guidance human resources development.

EKEP''s CURRENT PROJECTS IN RELATION TO COOPERATION & COORDINATION

- **Currently Running Guidance Projects Funded By NSRF 2007-2013**
 - **Pilot study on the quality criteria followed by the guidance services in the field of education and initial training.** (Aim: to lead to the implementation of the National Quality Assurance Management System for Guidance Services in Greece.)
 - **Interactive multimedia guidance internet portal for adolescents** (Greek Real Game, Video job profiles, E – portfolio, on – line self evaluation questionnaires etc.)(Aim: raising adolescents' access to information and career development services)

EKEP''s CURRENT PROJECTS IN RELATION TO COOPERATION & COORDINATION

- **"COMMON ACTION PLAN FOR THE DEVELOPMENT OF VOCATIONAL GUIDANCE AND COUNSELLING SERVICES IN EDUCATION, INITIAL TRAINING AND EMPLOYMENT" (NSRF 2007-2013)"**
- **Future Projects in Progress to be funded By NSRF 2007-2013**
 - Establishment and operation of a Lifelong Guidance Forum in Greece.
 - Multimedia guidance internet portal for adults.
 - Assessment, training and Accreditation of Counselling and Vocational Guidance Practitioners.
 - Implementation of pilot innovative lifelong guidance services at regional level. (individualized services / e-counselling services).
 - Implementation of career educational projects for students in secondary and technical vocational education.

CHALLENGES – CRITICAL ISSUES FOR THE ESTABLISHMENT OF A LIFELONG GUIDANCE FORUM IN GREECE

Needs and new perspectives

- The context of the **new regional administration and local government (decentralization system) KALIKRATIS** provides a greater potential towards the provision of integrated lifelong guidance services to citizens of all ages through the enhancing cooperation, networking and joint efforts and resources in the fields of education and lifelong learning.
- Further systemic interventions and additional legal framework for the provision of LLG services is of great importance in order to achieve a **unified National Policy on Guidance and Counselling**.
- EKEP is the executive body of System 6 of ESSEKA “System of Counselling, Vocational Guidance and Connection with the Labour Market” (Law 3191/2003) which provides a basic legal framework for the operation of a Forum as an Executive Committee of all guidance stakeholders. Thus we need to **examine the necessity of a new legal framework for the establishment and operation of a Lifelong Guidance Forum in Greece**.

Possible Areas of Intervention for the LLG Forum in Greece

- Platform for dialogue and consultation on issues relating to the unified organization of guidance system in Greece.
- Promotion of more effective networking of guidance services at national, regional and local level.
- Promotion of synergies and complementarity of actions and services targeted to citizens of all ages.

Possible Activities of the LLG Forum in Greece

- Conduct open consultations and exchange of know – how - Indicative issues for consultation:
 - Guidance Services Code Of Ethics.
 - Legal framework for the Accreditation of Counselling and Vocational Guidance Practitioners.
 - Legal framework for the Implementation of the Quality Assurance Management System for Guidance Services.
 - Implementation of networking activities and joint coordination meetings at regional and local level (e.g. Ad hoc reports, studies and policy proposals on lifelong guidance issues).
- Implementation of joint events and public raising awareness activities at local and regional level on the issues of lifelong guidance and career development. (e.g. Career Fairs, Job festivals etc).

LLG Forum Implementation Methodology

- EKEP will be the steering body of the LLG Forum and responsible for the Executive committee and secretariat.
- Efforts will be made to establish also regional lifelong guidance forums at the 13 prefectures – regions in Greece.
- The National Forum will support the regional forums with guidelines and know – how and also funding for the implementation of regional activities after submitting annual action plans to the Executive committee.

Possible Partners of the LLG Forum in Greece

- Administrative representatives of guidance services in the field of education, training and employment.
- Representatives of guidance practitioners' associations.
- Representatives of Social partners.
- Representatives of important bodies dealing with guidance for different target groups.
- Representatives of the guidance academic community.
- Representatives of the guidance end users (students, youth, adults, disabled, at risk groups).
- Representatives of the parents' associations.
- Representatives of the educational community.
- Representatives of the private guidance institutions' associations.

LLG Forum in Greece

Tools of the LLG Forum in Greece

- Use of the National Counselors' Network – Web Forum "IRIDA" (technical upgrading and further promotion of "IRIDA" is scheduled).

Funding

- The activities and operation of the LLG Forum will be initially covered by the EKEP's "COMMON ACTION PLAN FOR THE DEVELOPMENT OF VOCATIONAL GUIDANCE AND COUNSELLING SERVICES IN EDUCATION, INITIAL TRAINING AND EMPLOYMENT" (NSRF 2007-2013)". EKEP will fully undertake the costs of the LLG Forum after 2013.

LLG Forum in Greece

QUESTIONS INTERESTED TO INVESTIGATE AT THE COACHING ACTIVITY

- How can we achieve the most selective participation?
- Who would be the strongest champion to support its work?
- How can we better motivate the regional stakeholders to support the establishment of the LLG Forum at regional level?
- How can we achieve acceptance of the forum at policy level and also on behalf of all guidance stakeholders and the general public?
- Do we need more connection to the government than EKEP being a ministerial national authority?
- How can we encourage interagency cooperation and coordination of specific activities among different actors in the field of guidance?
- How can we measure the effectiveness of the activities and tasks undertaken by the forum?

Thank you !